

EasiDock[®] 1000EV



USER'S GUIDE

Contents

Table of Contents	2
Revolutionary Split Bridge® Technology & Product Description.....	3
Getting Started & System Requirements.....	3
LED Status Indicators.....	4
EasiDock 1000EV Ports & Connecting the Unit	5
Windows® 98SE, 2000, and XP - Driver Installation.....	6-7
Enabling the Mobility Icon on the Taskbar	7
Connecting to a LAN or Internet Service.....	7
Supported Video Settings for External Display & Adjusting the Display Refresh Rate.....	8
Adjusting Screen Resolution & Color Depth Settings.....	9
Enhanced Multi-Monitor Support Overview	10
Examples of Enhanced Multi-Monitor Usage	11
Multi-Monitor Display Mode Options	12
Things to know about Multi-Monitor and External Monitor Use.....	13
Undocking the EasiDock 1000EV.....	14-15
Configuring the Auto Backup Function	16-19
Uninstalling the EasiDock Software Driver	20
EasiDock Configuration Control Panel Applet	21
Control Panel Applet Options.....	22
Changing COM and LPT Ports Settings.....	23
Printer Installation	24
Serial PDA Installation.....	25
Multiple Location Setup for 2 or More EasiDock Devices.....	26
Troubleshooting / What to do if	27-29
FAQs	29
Warranty Information	30
Known Limitations, Care & Cleaning	31
Technical Support & Customer Service	32
Technical Specifications	33
Regulatory Information	34

Revolutionary Split Bridge® Technology

Mobility's patented Serialized PCI Split Bridge Technology is the world's only multi-platform high-speed solution for docking and port replication products. Plugging a Split Bridge based device into a notebook PC starts instant communication with the computer, giving the user immediate access and high-speed data transfer to all attached peripherals. Unlike other technologies, Mobility's Split Bridge link supports full-duplex data transfer and offers a data transfer rate of 1.25 Gbps. The link does not require additional memory, software or CPU resources, resulting in high performance at any time. Protected under U.S. Patent numbers:



U.S. Patent No. 6,070,214
 U.S. Patent No. 6,088,752
 U.S. Patent No. 6,256,691
 U.S. Patent No. 5,941,963
 U.S. Patent No. 6,044,215

Other U.S. and foreign patents pending.

Product Description

The EasiDock® 1000EV is designed to connect multiple peripherals to your notebook PC through a single cable connection. All connected peripherals are automatically detected by the computer as soon as the unit is connected to the computer's 32-bit CardBus slot. All ports on the EasiDock 1000EV are additional ports to those already found on your notebook.

Getting Started

Before installing and using this product, Mobility Electronics recommends the following:

- Confirm that your system meets the requirements outlined below.
- Review the **Known Limitations** section of this users guide.
- Visit the Mobility Electronics web site www.mobilityelectronics.com/support and check for the availability of software and known limitation updates. The software version is printed on the CD provided with this product.
- Update the drivers for the peripherals you intend to attach to the EasiDock 1000EV. Using the latest drivers available for your peripherals is likely to optimize the performance of your peripherals for use with the EasiDock 1000EV.
- Register this product—registered users receive free technical support for the first ninety (90) days of product usage.

SYSTEM REQUIREMENTS

To use this EasiDock product, your notebook computer must meet the following system requirements:

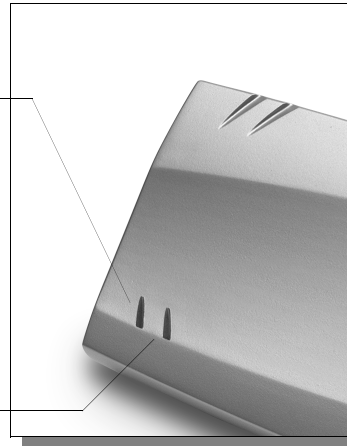
- Your notebook computer must be based on the PCI system bus. Most notebook computers produced in 1998 and later are based on the PCI system bus. Check with your notebook manufacturer if you are not sure whether your computer uses the PCI system bus.
- One (1) available 32 bit, Type-II CardBus PC Card slot.
- TI (Texas Instruments) or ToPic (Toshiba) CardBus controller; select notebooks using the Q2 Micro CardBus controller are supported. Visit www.mobilityelectronics.com/support for the latest notebook model compatibility information.
- Access to either a CD-ROM drive or the Internet to install the EasiDock driver software.
- One of the following operating systems: Windows® 98SE, Windows 2000, or Windows XP.
- 40MB available hard drive space.
- Pentium II 233 MHz processor; 64MB RAM (128MB RAM recommended for XP users).

LED Status Indicators

The EasiDock® 1000EV has 4 LED indicators: POWER status, Split Bridge link status between the EasiDock 1000EV and the notebook, Ethernet activity, and Ethernet data transfer speed link.

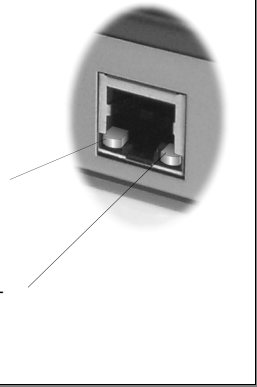
POWER Indicator
Power ON / OFF

Link Indicator
ON ...link established
OFF...no link



Ethernet Activity
Green ... blinking

Ethernet Link
Yellow ... 100Base-T
Green ... 10Base-T

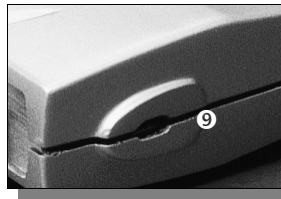


EasiDock 1000EV Ports

The following ports can be found on the EasiDock 1000EV. The ports on this device can be used in addition to the ports on your computer, i.e. you can connect a printer to the EasiDock's parallel port and connect a parallel ZIP drive direct to your computer.



- ❶ **2 USB Ports**
- ❷ **PS/2 Mouse Port**
- ❸ **PS/2 Keyboard Port**
- ❹ **Printer (Parallel) Port**
- ❺ **Serial Port**
- ❻ **External Monitor Port**
- ❼ **10/100 Ethernet Port**
- ❽ **Power Input Jack**
- ❾ **Kensington Lock Connector**



Driver Installation

Windows® 98SE, 2000, and XP

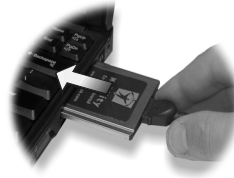
PRE-INSTALLATION RECOMMENDATIONS:

Visit www.mobilityelectronics.com/support/drivers and check for the availability of software updates; the software version is printed on the CD provided with this product.

Update the drivers for the peripherals you intend to attach to the EasiDock 1000EV. Using the latest drivers available for your peripherals is likely to optimize the performance of your peripherals for use with the EasiDock 1000EV.

*Please have your Operating System CD ready (Windows® 98SE, *2000, or *XP). It may be necessary to insert it into your CD-ROM drive in case a file can not be found on your system.*

1. Turn on your notebook PC.
2. If you have anti-virus software installed on your system, you need to disable it (You may re-enable it after installing the EasiDock device).
3. Insert the EasiDock Driver CD and wait for the splash screen to appear. If the splash screen does not appear automatically, click **Start** and scroll up to Run... Then type '**d:\autorun.exe**' and click **OK**. If your CD drive letter is not '**d:**' you will need to replace it with the drive letter of your system (e.g. e:\autorun.exe).
4. Click on the **EasiDock Driver** button in the menu screen. Be patient; this may take a few minutes.
5. Click on **Next** for each window that pops up (Click on **Finish** and reboot the computer if asked to do so; if you have previous EasiDock drivers on your system, click 'Yes' when asked to confirm removal of the previous driver).
6. Make sure that your external monitor has power and is connected to the dock.
7. Printer users: Disconnect power from the printer prior to connecting the printer to the EasiDock.
8. Connect all other peripherals to the dock at this time and turn ON all peripherals after they are connected.
9. Connect the EasiDock power cord to the power adapter and a wall outlet.
10. Connect the barrel connector of the power adapter cord to the EasiDock.
11. Confirm that the power LED on the EasiDock 1000EV is on.
12. Insert the Split Bridge Cable's PC Card fully into the CardBus slot of your notebook PC (this is referred to as 'docking').
13. Installation and setup will automatically continue; follow the on-screen instructions. Hit the **Enter** key in each window that pops up. If the 'Add New Hardware Wizard' comes up, select '**search for the best driver**', then make sure that '**CD-ROM**' is selected. Continue with the installation process by following the instructions on the screen. You may be prompted to reboot your system.



***Windows 2000 users only**

Click '**Yes**' every time the '**Digital Signature Not Found**' window appears on the screen.

***Windows XP users only**

Click '**Continue Anyway**' every time the '**Hardware Installation**' window appears.

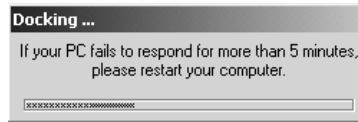
*The EasiDock software drivers have been tested comprehensively by Mobility Electronics for use with the Windows 2000 and XP operating systems.

(Continued on page 7)

(Continued from page 6)

14. The registration screen will then come up. Registered users receive free technical support for the first ninety (90) days of product usage. Choose an option and click **OK**.
15. Click **OK** when the 'Congratulations' window appears on the screen.

- Installation is complete after all the EasiDock ports and connected peripherals are detected (enumerated) by the system. This may take several minutes and will require several reboots.
- The EasiDock docking meter will appear as the operating system enumerates the ports on the EasiDock and as devices are attached.



- If you do not see the red Mobility icon in the System Tray (Toolbar), reboot your computer.



Enabling the Mobility Icon on the Taskbar

When you log in as a new user the Mobility icon will not be displayed on the Windows taskbar, even though the EasiDock software is present. To show the Mobility logo on the taskbar do the following:

1. Click **Start**, scroll to **Settings** and select **Control Panel**.
2. Double-click on **Mobility EasiDock**.
3. Select the **Options** tab.
4. Mark the '**Show Mobility Icon in System Tray (Task Bar) While docked**'.
5. Click on **Apply**.
6. Click on **OK**.

Once the Mobility icon is on the taskbar you can do the following:

- Access the User's Guide
- Select a display option
- Undock
- Configure auto backup
- Access the EasiDock Settings
- Access Product Registration
- Get the version number of the installed software

Connecting to a LAN or Internet Service

The integrated *Realtek Ethernet Controller* software was automatically installed during initial driver installation.

PLEASE SEE YOUR SYSTEM ADMINISTRATOR OR A REPRESENTATIVE OF YOUR LOCAL INTERNET SERVICE PROVIDER TO FINISH THE ETHERNET (NETWORK) INSTALLATION. THIS IS NEEDED TO GIVE YOU ACCESS TO YOUR LOCAL AREA NETWORK AND/OR THE INTERNET.

Supported Video Settings for External Display

The ATI Rage XL video controller integrated in the EasiDock 1000EV supports the following 2D video settings:

Supported Video Settings*		
Resolution	Color Depth	Refresh Rate (Hz)
640 x 480	32 bit	60, 72, 75, 90, 100
800 x 600	32 bit	60, 70, 75, 90, 100
1024 x 768	32 bit	60, 70, 75, 90, 100
1280 x 1024	32 bit	43, 60, 70, 72
1600 x 1200	24 bit	76, 85
1600 x 1200	32 bit	60, 66

*The table above outlines the capabilities of the video controller; your external display may or may not support all of these settings.

Adjusting the Display Refresh Rate

If the external display seems blurry, adjust the display refresh rate as follows:

Windows 98SE

1. Right-click the mouse anywhere on the Windows desktop.
2. Select **Properties...**
3. Click on the **Settings** tab.
4. Click on the **Advanced...** button.
5. Click on the **Adapter** tab.
6. Click on the lower drop-down menu (Frequency Refresh field).
7. Select desired refresh rate (if available, selecting 'optimal' is recommended) and click **Apply**.
8. Click **Yes** to apply and confirm settings change.
9. Repeat these steps until the display does not appear blurry anymore.

Windows 2000 & XP

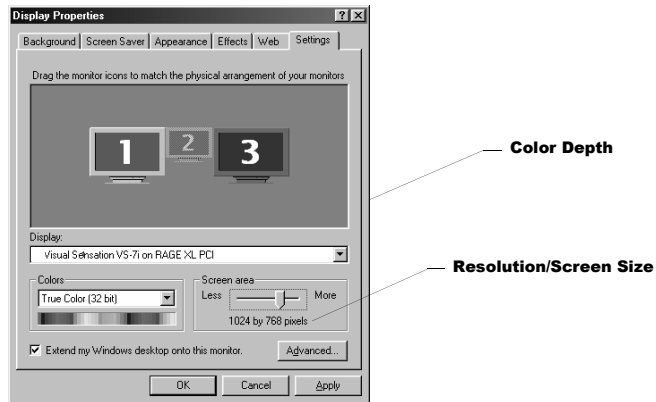
1. Right-click the mouse anywhere on the Windows desktop.
2. Select **Properties...**
3. Click on the **Settings** tab.
4. Click on the **Advanced...** button.
5. Click on the **Monitor** tab.
6. Click on the lower drop-down menu (Frequency Refresh field).
7. Select desired refresh rate (if available, selecting optimal is recommended) and click **Apply**.
8. Click **OK** to apply and confirm settings change.
9. Repeat these steps until the display does not appear blurry anymore.

Adjusting Screen Resolution & Color Depth Settings

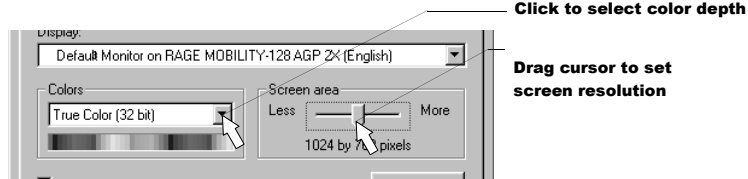
IMPORTANT: External monitor settings must meet or exceed the settings of the notebook screen. Lower settings are not supported. If your external monitor functions as expected, you do not have to make these adjustments.

The highest number is your external monitor. If your computer displays 3 monitors (as shown in the illustration below), you will need to change monitor #3.

1. Right-click anywhere on the Windows desktop.
2. Select **Properties...**
3. Click on the **Settings** tab.



4. 98SE users only: Right-click on the monitor image #2, (#3, if your window displays 3 monitors), and confirm that the word **Enabled** is checked.
5. Click on monitor image #1 to find out what resolution and color depth your notebook uses (e.g. 1024 x 768, 32-bit color).
6. Click on monitor image #2, and change the settings to match the notebook settings.
7. Click on **Apply**.
8. Click **Yes** to accept the changes.
9. Repeat steps 6 through 8 for the 3rd monitor image, if applicable.
10. Click **OK**.



Enhanced Multi-Monitor Support—Overview



Mobility's **Enhanced Multi-Monitor Support** software has been designed to increase the user experience with your EasiDock 1000EV Split Bridge™ enabled port replicator. The software gives EasiDock users the ability to create additional Windows® workspace on a secondary monitor or flat panel display in Windows® 98SE, 2000, and XP. The EasiDock 1000EV port replicator includes an integrated ATI Rage XL video controller that allows the use of a secondary monitor with any notebook.

Enhanced Multi-Monitor Support software, in conjunction with Windows operating systems, provides users the ability to simultaneously run several applications on multiple displays. In other words, the software effectively creates one large display area between two screens. Users can position application windows for viewing on either the notebook display or on an external monitor. For example, keep an e-mail application open on one display and create a presentation on the other. Or conduct research on the Internet while actively creating a document in an application window on the display. The scenarios are endless. **Enhanced Multi-Monitor Support** provides comfortable, full-screen viewing of multiple windows—as well as providing the ability to view one large window across both the notebook display and an external display. This application is often helpful for users that need to view Microsoft Excel worksheets or other oversized files.

Examples of Enhanced Multi-Monitor Usage

Using the external screen as the primary display

Many users prefer the larger screen for most tasks, and the smaller screen to gain additional display area. To move an open application from one display to the other, position the cursor over the application's title bar, click and hold the left mouse button and drag the application to the desired position. With some applications you must click on the "restore down" button before dragging the application window to the alternate display.



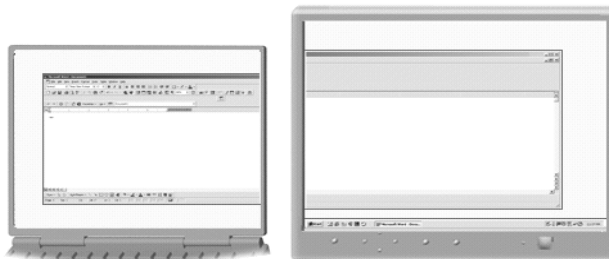
Notebook Display
(used as secondary display)

External Display
(used as primary display)

- functions as an **addition** to the external display
- shows all desktop icons and start bar
- move applications **between** both displays

Using the notebook screen as the primary display

In this case, the application can be positioned across both screens at once. The illustration below is an example of one large desktop, with a window displayed across two monitors.



Notebook Display
(used as primary display)

External Display
(used as secondary display)

- functions as one large desktop display
- stretch application **across** both displays
- shows all desktop icons and start bar

Multi-Monitor Display Mode Options

1. Right click on the Mobility icon in the Sys Tray
2. Select '*Display Options*'



98SE Users

Windows 98SE users have two multi-monitor display options:

Windows Desktop on notebook screen
Windows Desktop on external monitor

2000 & XP Users

Windows 2000 and XP users have four multi-monitor display options:

External Display Only
Internal Display Only
Windows Desktop on External Display (notebook display secondary)
Windows Desktop on Notebook (external display secondary)

Things to know about Multi-Monitor and External Monitor Use

Full screen DOS applications

Applications that run in a full screen mode, such as the Command Prompt (DOS screen) and many games, will only appear on the laptop screen and not on the external monitor.

System event messages

System event messages (such as Task Manager) may appear on the notebook screen. To ensure visibility of these messages it is recommended to leave your laptop open when operating in 'Windows Desktop on External Monitor' mode (98SE users) or 'Windows Desktop on External Display' mode (2000/XP users).

Disabled functions

Due to power management methodologies implemented in the notebook BIOS and its effect on the functionality of the ED1000EV, hibernate and suspend functions are disabled in the notebook while docked. These functions will work as designed while the notebook is undocked.

Screen resolution and color depth

For best performance, it is necessary to set the external monitor resolution and color depth to the equivalent or higher setting than that of the notebook. Refer to the 'Adjusting Screen Resolution and Color Depth Settings' section of this manual.

Identifying the external monitor

If the **Settings...** tab (page) displays more than two monitors, monitor #3 is the external monitor connected to the dock. Otherwise, it will be monitor #2. To identify a monitor, right click on the monitor illustration on the screen and select 'identify'.

Moving Windows between External Display and to Notebook Display—All Operating Systems

With some applications you must click on the "restore down" button before dragging the application window to the alternate display.

Moving Applications between displays—98SE Only

Press **Alt + ~** key to activate the display window. Hold down the **Alt** key and keep pressing the **~** key until the desired application is selected. Keep holding the **Alt** key and let go of the **~** key. While holding the **Alt** key press **1** or **2** to move the application to the according display.

Moving All Windows from External Display to Notebook Display—2000 & XP Only

Press **Ctrl + Alt + i** key to move all open applications and windows from the external display to the notebook display.

Windows 98SE users

Pressing the '**Ctrl + Alt + Del**' key combination will display the 'Task Manager' window on the notebook screen only. This is a function of the operating system.

Undocking the EasiDock 1000EV

98SE, 2000, XP Users

NEVER remove the PC Card from the notebook BEFORE undocking the EasiDock 1000EV. There are two options for users to Undock: (1) select the Undock command from the Mobility icon (preferred method) and (2) pressing the Request to Undock Button on the right panel of the EasiDock 1000EV.

Removing the PC Card prior to undocking may cause your computer to temporarily lock up.

XP Tablet Edition Users

Version 3.03 of the Drivers fully supports "Surprise Undock". To undock, simply pull the cardbus out of the tablet. There is no need to inform the operating system of the undocking event.

Option 1—Using the Undock Command from the Mobility Icon

1. Click the right mouse button on the Mobility icon on the taskbar.
If the Mobility icon is not shown on the taskbar refer to 'Enabling the Mobility Icon on the Taskbar'. This is usually the case if you are set up as a new user on a computer.
2. Scroll to **Undock...**, and click on it.



3. Wait for the following message to appear on the screen, click **OK**



Closing all open applications, including applications that run in the background, e.g. Palm Pilot HotSync Manager, is recommended before undocking the EasiDock 1000EV.

Option 2—Using the Request to Undock Button

1. Press the **Request-to-Undock** button located on the right side of the EasiDock 1000EV unit.
2. Scroll to **Undock...** , and click on it.
3. Wait for the following message to appear on the screen, click **OK** and then remove the PC Card from its slot.

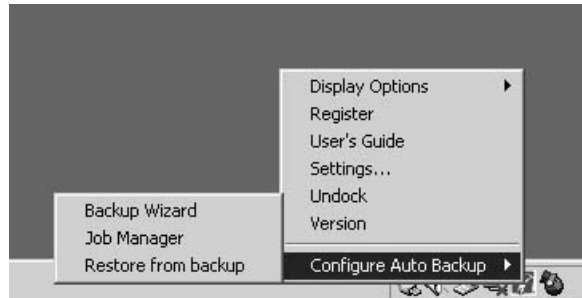


Closing all open applications, including applications that run in the background, e.g. Palm Pilot HotSync Manager, is recommended before undocking the EasiDock 1000EV.

Configuring the Auto Backup Function

1. Right-click on the Mobility icon on the taskbar and select **Configure Auto Backup...**

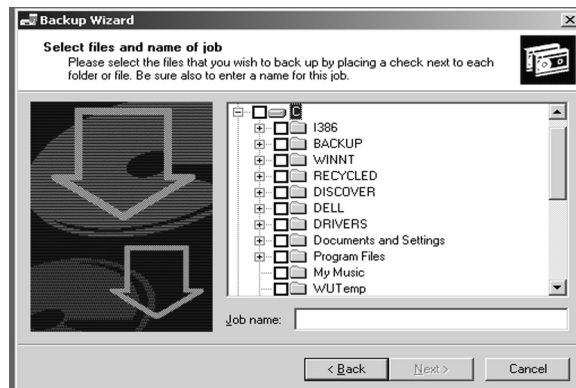
If the Mobility icon is not shown on the taskbar refer to 'Enabling the Mobility Icon on the Taskbar'. This is usually the case if you are set up as a new user on a computer.



This window will give you three options: Backup Wizard, Job Manager, and Restore from Backup.

Auto Backup Wizard

1. Select **Backup Wizard** to setup a task to backup the files on your computer.
2. Select **Next** and choose the files you wish to backup by placing a check next to each folder or file. To conduct a complete backup, select **My Computer**.

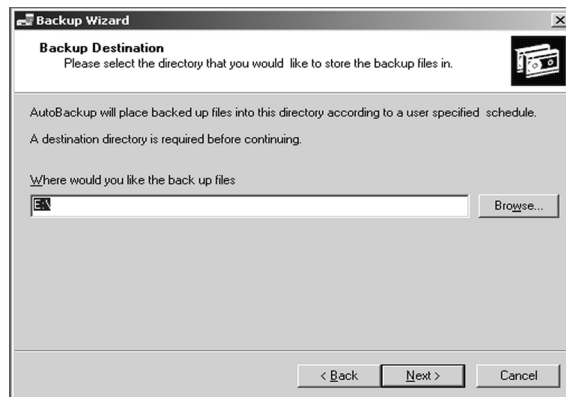


3. Enter a **Job Name**.
4. To continue, select **Next**.

(Continued on page 17)

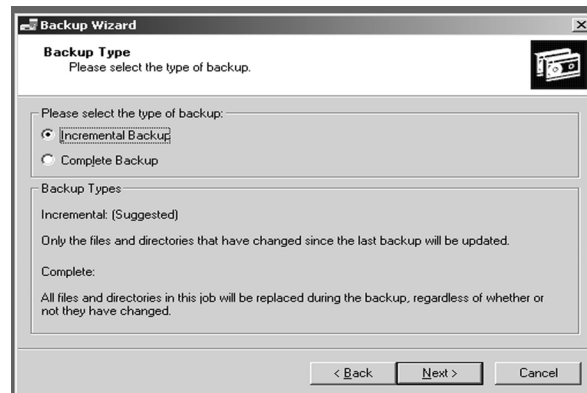
Auto Backup Wizard

The next screen allows you to select the directory where you would like to store the backup files in. You must enter a destination other than the location you are backing up.



To continue, select **Next**.

The next screen allows you to select the type of backup you would like to run.

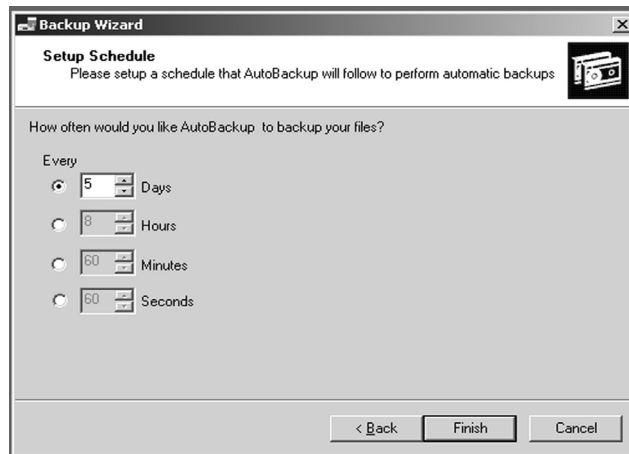


1. **Incremental Backup** is suggested and only backs up the files and directories that have changed since the last backup.
2. **Complete Backup** includes all files and directories regardless of whether or not they have changed.
3. To continue, select **Next**.

(Continued on page 18)

Auto Backup Wizard

Now setup a schedule that Auto Backup will follow to perform automatic backups. You can select your backup to occur by the day, hour, minute, or even by the second.

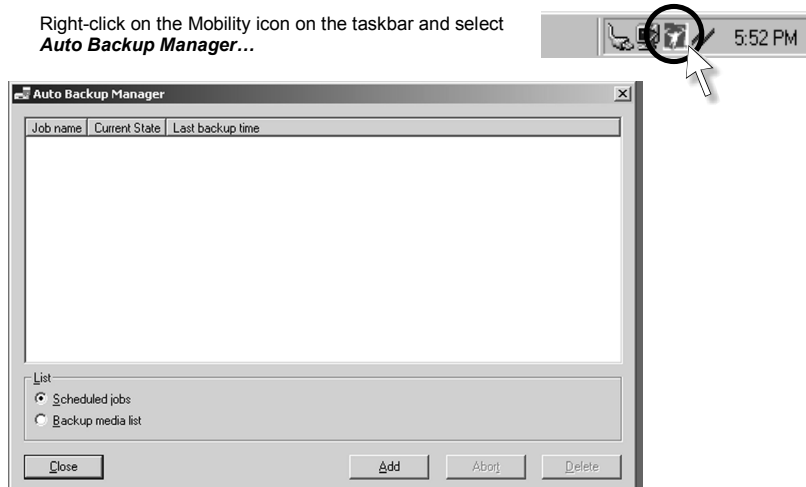


Select **Finish**.

(Continued on page 19)

Auto Backup Manager

Right-click on the Mobility icon on the taskbar and select **Auto Backup Manager...**



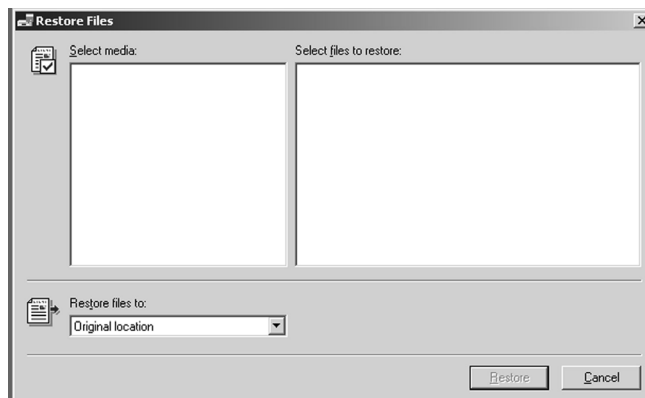
Scheduled Jobs allows you to view any jobs that have been created. Every time a scheduled job occurs, 'Running' will appear in the 'Current State' column. Once a job has occurred, 'Inactive' will appear here. Value in the 'Last updated' column will update.

When a new job is created, Auto Backup immediately starts procedure for creating backup media. **Backup Media List** is a list of backup archives and displays where your files will save to. You can use backup media to restore files if needed.

Select **Abort** to cancel a scheduled backup.

Restore from Backup

This function is also found if you right-click on the Mobility icon on the taskbar. If a failure occurred during a backup job, utilize this feature to retrieve and restore missing files. You may restore them to the original location, an alternative location



Uninstalling the Software Driver Using the CD

It will be necessary to remove the Split Bridge PC Card from your notebook to successfully remove the drivers.

Insert the EasiDock driver CD, wait for the menu screen to appear and select 'EasiDock Driver'. The setup program will detect the previously installed driver and give you the option to uninstall it.

Uninstalling the Software Driver without the CD

Windows 98SE & XP

1. Undock the unit as described in this user's guide.
2. Click **Start**, scroll to **Settings** and select **Control Panel**.
3. Double click on **Add/Remove Programs**.
4. Select **Mobility EasiDock Drivers x.xx**.
5. Click the **Add/Remove** (or Change/Remove) button.
6. Click **OK** (or **Yes**).
7. Wait for the process to finish and click **OK** to finish the uninstall.
8. Restart your system.

Windows 2000

1. Undock the unit as described in this user's guide.
2. Click **Start**, scroll to **Settings**, then select **Control Panel**.
3. Double click on **Add/Remove Hardware**.
4. Click **Next**.
5. Select **Uninstall/Unplug a device** then click **Next**.
6. Select **Uninstall a device** then click **Next**.
7. Check the **Show hidden devices** box.
8. Scroll down to **EasiDock or Mobility PCI to PCI bridge**, highlight it then click **Next**.
9. Click **Yes, I want to uninstall this device**.
10. Click **Next**.
11. Click **Finish**.
12. Click **Start**, scroll to **Settings** then select **Control Panel**.
13. Double click on **Add/Remove Programs**.
14. Select **Mobility EasiDock Drivers x.xx** highlight it and click **Next**.
15. Click the **Change/Remove** button.
16. Click **Yes** when asked to confirm file deletion.
17. Wait for the process to finish then click **OK** to finish the uninstall.
18. Restart your system.

EasiDock Configuration Control Panel Applet

Changing settings and configuring LPT or COM ports is easy and fast with the supplied utility. The utility is automatically installed when loading the EasiDock driver from the CD. Use it to find out what peripherals (devices) are installed in your EasiDock unit by doing the following:

1. Click on **Start**.
2. Scroll to **Settings** and select **Control Panel**.
3. Double-click on **Mobility EasiDock**.

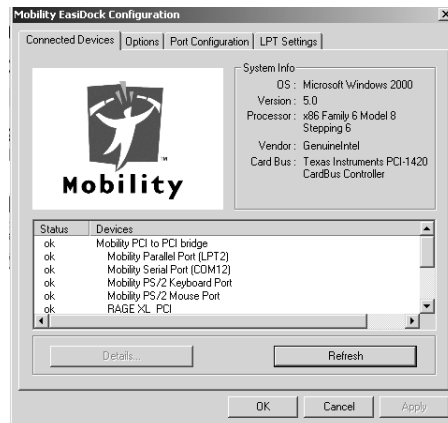
OR

Right-click on the Mobility icon on the taskbar and select **Settings...**

If the Mobility icon is not shown on the taskbar refer to 'Enabling the Mobility Icon on the Taskbar'. This is usually the case if you are set up as a new user on a computer.

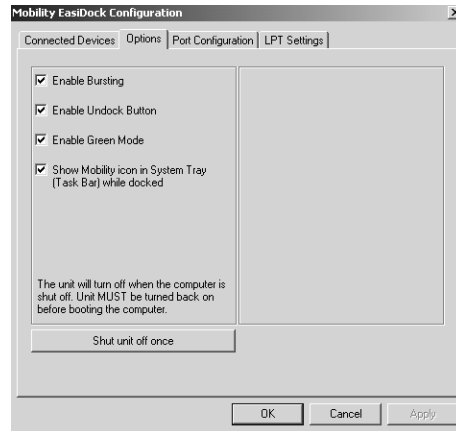


The new window shows system information such as Operating System (OS), Processor, CardBus Controller, and more. It lists all installed devices and gives you Status Indication to let you know if a device is installed correctly.



Control Panel Applet Options

Select the **Options** tab and make changes as needed. To check a box, simply click on it with your mouse.



Enable Bursting

Makes tasks perform at higher speeds.

Enable Undock Button

Enables/disables the Undock button on the side of the dock.

Enable Green Mode

Does not apply to the EasiDock 1000EV.

Mobility icon in System Tray (Task Bar) while docked

Displays the Mobility icon in the Sys Tray, access the EasiDock Utility Applet, change display settings, and undock.

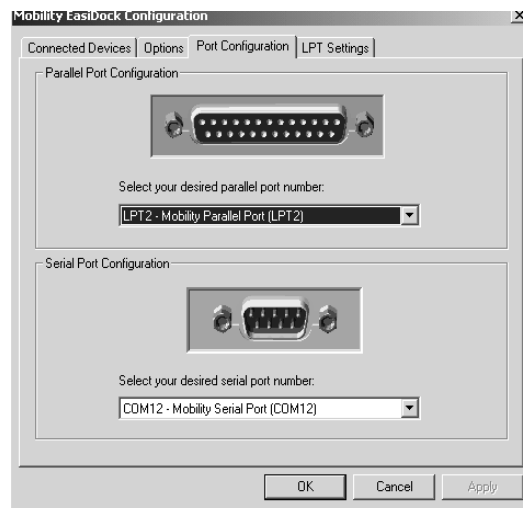
Shut unit off once

Does not apply to the EasiDock 1000EV.

Changing COM and LPT Port Settings

Mobility has provided a utility to change the COM and LPT port settings of your EasiDock device. You may need this utility when adding serial or parallel devices to your computer. The utility is not needed during initial setup of the dock. To run the utility do the following:

1. Right click on the Mobility icon in the SysTray (in the taskbar).
2. Select **Settings....**
3. Click on the '**Port Configuration**' tab then select the settings you want and click **OK** to save them.



Printer Installation

DISCONNECT POWER FROM THE PRINTER PRIOR TO CONNECTING THE PRINTER TO THE EASIDOCK. Not disconnecting the power may result in damage to the dock and/or the printer.

If your printer was installed on your notebook originally, follow the steps below to install the printer connected to the dock:

1. Right-click the Mobility Icon in the system tray and go to settings.
2. Find the listing for *Mobility Parallel Port (LPTX) X* being the number assigned to that port by your computer. Note that number and close the settings screen.
3. Open up Control Panel.
4. Open up the Printer folder.
5. Right-click on the printer you want to use and select Properties.
6. Choose the Ports tab (Win2000 & XP) or the Details Tab (Win98SE). Make sure that the port selected to print matches the Mobility Applet printer port number as follows (for example use LPT3). Use the drop-down menu if necessary.
7. Click on Apply and OK. Reboot the computer and the printer will then be ready to use.

If you are installing a printer for the first time, follow the steps below:

1. Disconnect power from the printer and connect the printer to the dock.
2. Turn ON the printer.
3. Make sure the EasiDock driver is installed and the notebook is shut down.
4. Insert the PC Card into the notebook, and power on the system.
5. Click on **Start** and scroll to **Settings**.
6. Select **Printers**.
7. Double-click on the **Add Printer** icon.
8. The Add Printer Wizard will appear. Click **Next**.
9. Follow the instructions on the screen using the following guidelines:

Select **automatic installation** if this is an option. In case it is not an option, use the following guide lines to finish the installation:

1. Set the printer up as a **Local Printer**.
2. Select the manufacturer and model of the printer when asked.
3. If no driver is detected you must use the driver that came with the printer. Insert the manufacturer's driver when asked. Check the 'CD-ROM' or 'Floppy' box, depending on the media the driver is on.
4. Select the **Mobility Printer Port** when asked to select a port.
5. Set the printer as the default printer if desired.

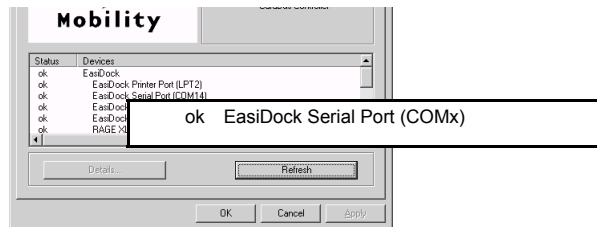
'Serial' PDA Installation

NOTE: You must assign the EasiDock COM port to the PDA after installing the Palm Desktop software. It is highly recommended to use the latest drivers available from the PDA manufacturer; check the PDA manufacturer web site for updated drivers and software before installing the product.

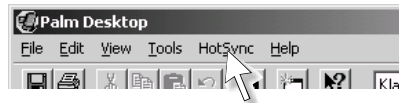
1. Right-click on the Mobility icon in the sys tray.



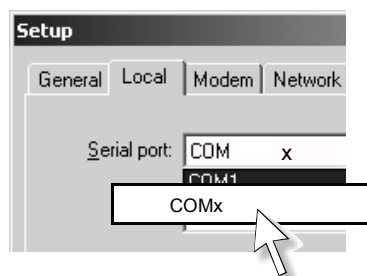
2. Select '**Settings...**' and look for 'EasiDock Serial Port (COM x)'. 'x' represents the COM port number used by the dock' serial port.



3. Click **OK** to close the window.
4. Open the Palm Desktop application and click on **HotSync**.



5. Select '**Setup**' from the dropdown menu, then click on the '**Local**' tab.



6. Click on the dropdown box for the Serial port and select 'COMx'. 'x' represents the COM port number used by the dock.
7. Click **OK**. Your PDA is now ready for use.

Multiple Location Setup for 2 or More EasiDock Devices

A hardware profile tells the operating system (Windows) which devices to activate when you start your computer and/or what settings to use for each device. When you first install Windows on a notebook, a default hardware profile called 'Undocked Profile' is created. This profile enables all installed devices (internal and external).

Hardware profiles will let you change which devices your computer uses when you move it from location to location. For example, you may have one profile named 'Office EasiDock 1000EV'. A second profile may be called 'Home EasiDock 1000EV.'

You do not have to create a hardware profile for your first EasiDock device. It is created automatically when installing the unit.

To create a profile for the second EasiDock device, you must be logged on as an administrator:

1. Open **System** in Control Panel.
2. In Windows 2000, click the **Hardware** tab and then click **Hardware Profiles**.
In Windows 98SE, click the **Hardware Profiles** tab. In Windows XP, select **Performance and Maintenance**, then **System**, then **Hardware Tab**, then **Hardware Profiles**.
3. Under **Available Hardware Profiles**, click the existing hardware profile.
4. Click **Copy** to open the **Copy Profile** dialog box and type a new name for the copy (e.g. 'Office EasiDock 1000EV').

If you wish to change the name of a profile at a later time, click **Rename** to open the **Rename Profile** dialog box and type a new name for the selected profile. To remove a profile, click on the profile, then click **Delete**.

If there is more than one hardware profile, you can designate a default profile (e.g. 'Office EasiDock 1000EV') that will be used every time you start your computer. You can also have Windows ask you which profile to use every time you start your computer. Once you create a new hardware profile (e.g. 'Home EasiDock 1000EV'), shut down your system and reboot it. Select 'Home EasiDock 1000EV' when the computer displays a list of available profiles. You do not need to reinstall the EasiDock software for the second device, or any EasiDock device thereafter. Make sure your dock is turned ON and insert the PC Card into the CardBus slot. Any peripheral installed or connected to the dock will automatically be detected by the operating system. Use the Device Manager to disable and enable devices within this profile. When you disable a device, the device drivers for the device are not loaded when you start your computer. If the external monitor display is distorted or blurry, make resolution and color depth changes as described in this guide.

Troubleshooting / What to do if.....

Peripherals are not functioning properly

Confirm the cables attached to each peripheral are the correct type. Make sure that the cables are connected to the correct ports. Confirm the connections and ports are not damaged.

Shut down your portable computer. Remove power from the EasiDock 1000EV and detach your computer from the dock. Re-connect power, re-attach peripherals to EasiDock 1000EV, then re-dock. Turn on your portable computer and confirm all peripherals are functioning.

Confirm all peripherals are correctly configured (Refer to System Settings in your Microsoft Windows user's guide). Visit the web site of the peripheral manufacturer for updated device drivers.

Confirm the peripherals function when connected directly to your portable computer. If the peripherals function properly when attached to the computer, but not the EasiDock 1000EV, call Technical Support at 1-800-474-7593.

The Mobility icon does not appear on the taskbar

The Mobility icon is not displayed when a new user logs on to the system. To enable the icon refer to 'Enabling the Mobility Icon on the Taskbar' in this guide.

Parallel ZIP Drive & Multi-functional Printers (Fax/Printer/Copier)

Parallel ZIP drives and some printers using the ECP protocol are not supported in Windows 98SE. Please visit www.mobilityelectronics.com/support for the latest compatibility information.

Serial Devices

This product is designed to work with PS/2 and USB mice. Connecting a *serial mouse or similar input device* will have degraded performance.

I get a message saying 'You should not remove this device'

Always close applications before undocking. This message is usually caused when using a PDA (e.g. Palm Pilot). Click OK to close the message window. In the case of a Palm Pilot, stop the PDA's *HotSync Manager* by clicking on its icon in the sys tray. Select *Exit*, then click *Yes* to confirm your selection. Refer to your PDA's manual for the proper shut down procedure for its software. To find out if an application is running in the background, simultaneously hold the Ctrl-Alt-Del keys to open the Windows Task Manager. Close (end) any application that may cause the problem, and then try to undock again.

My external display is badly distorted (wavy lines, double or triple display output)

The resolution for the external display may be set to a resolution that is not supported by the external monitor. Right-click on the desktop area, select 'Properties...', and click on the 'Settings' tab. In the 'Display' field, select the listing for Rage XL PCI video adapter. Adjust the screen resolution until the external display is clear. If the display remains blurry, you may need to adjust the refresh rate. Refer to the *Adjusting the Display Refresh Rate* section of this guide for more information.

The external monitor image is blurry

Adjust the refresh rate of the external monitor using one of the supported settings outlined in the *Supported Video Settings for External Display* section of this guide. Instructions on how to change the refresh rate may be found in the *Adjusting the Display Refresh Rate* section of this guide.

Troubleshooting / What to do if..... (continued)

The EasiDock 1000EV is not recognized by my notebook

Make sure the driver is properly installed. Shut down your computer. Remove the PC Card from the computer and unplug the EasiDock's power cord. Remove all peripherals from the dock. Connect only a monitor, a mouse, and a keyboard to the dock. Plug the power cord back in. Make sure the Power LED is on. Insert the PC Card into the notebook and boot the notebook. If this does not solve the problem, boot your computer without the dock and reinstall the driver.

The notebook displays a 'blue screen' or locks when I insert the PC Card

If you inserted the Card and the computer locked or displayed a 'blue screen', it is very likely that the power for the dock was OFF. The EasiDock 1000EV must be powered "ON" before inserting the PC Card. To fix the problem, shut down your computer and remove the PC Card from the computer. If you cannot shut down your system, hold the computer's power button for several seconds until the computer turns off. Then restart the computer without the dock being connected. If the computer boots in 'Safe Mode', restart it again using the Windows shut-down/restart command. **Make sure the dock is turned ON and reinsert the PC Card.**

If you still have problems and this is the first time you are using this device, refer to the **Systems Requirements** section in this guide.

A yellow exclamation mark '!' is displayed next to a device in the Device Manager

Open the Device Manager. If you are using Windows 2000 or XP, click on 'View' and select 'view devices by connection'. Right-click on the device with the exclamation mark and select 'Properties.' Click on the 'Driver' tab. Remove (uninstall) the driver, then restart your system. The peripheral is automatically detected by the operating system and will look for compatible drivers. Insert the driver disc that came with your peripheral and make sure to check the 'CD-ROM' box when the operating system is looking for a driver (check 'Floppy' if your driver is on a floppy disk). Follow the instructions on the screen to finish the installation.

I do not see anything on my notebook screen, and I do not have an external monitor

A "Hotkey" is available for switching applications between the notebook and the external display. In Windows 98SE, hold down the **Alt** key, press the ~ key (this key is above the left 'Tab' key) and then press the **1** or **2** key. If the Windows Desktop is still not displayed on the notebook screen, you may have to press the ~ key twice before hitting the **1** or **2** key.

In Windows 2000 and XP, hold down the **Ctrl + Alt + i** keys to return all open windows and applications to the notebook display.

Microsoft Outlook windows open on the wrong screen when using multi-monitor

Outlook 2000 was designed by Microsoft for multi-monitor usage. If you are using Outlook 98 you are likely to encounter this issue. Upgrading to Outlook 2000 is highly recommended to enjoy the benefits of multi-monitor usage.

Some files/applications open on a different screen than expected

Drag the window to the display of choice. This happens if an application (software) does not use the operating system to create a window.

I lose my USB mouse after I dock my notebook

This is an issue associated with the Windows 98SE operating system. Disconnect and reconnect the mouse to fix this problem. Refer to the following URLs for more information:
<http://support.microsoft.com/support/kb/articles/Q236/9/34.ASP>, or
<http://www.usbman.com/Troubshooter%20General.htm>

Troubleshooting / What to do if..... (continued)

I am using Window 98SE, and the computer locks when I insert the PC Card or when the 'Found New Hardware Wizard' finds the USB ports

Please go to the URL below to download the USB patch for Win98SE on Microsoft's web site. It will then be necessary to load the patch according to Microsoft's instructions.
<http://support.microsoft.com/support/kb/articles/Q253/6/97.asp>

My computer does not go into Suspend or Hibernate mode when connected to the dock

External video has difficulty with Suspend and Hibernate. To overcome these difficulties both Suspend and Hibernate are disabled while docked. Computers are set *not* to go into sleep (suspend, hibernate) mode when power is connected to the notebook.

I no longer have my Windows operating system CD, but I am prompted to insert the CD into my drive.

The system is looking for '.cab' files. These files may already be loaded on your system. To see if the files are on your system, do the following: Step 1) Open Windows Explorer. Step 2) Click on the '+' to expand the 'C' drive. Step 3) Click on the '+' symbol next to the 'Windows' folder. Step 4) Scroll down to see if you have an 'Options' folder. If so, the Windows driver cab files are loaded on your system and the Windows CD is not needed. When prompted to insert the CD, click on 'OK', then specify the location:
'C:\windows\options\cab'.

Note: The computer Restore disk that came with your computer will not install the cab files on your system. You must have the Windows CD or the cab files loaded on your system.

Frequently Asked Questions

If the above troubleshooting information does not give you the answer(s) you need, please visit our web site at www.mobilityelectronics.com/support and refer to our FAQ section.

Hardware Warranty

Mobility Electronics, Inc. warrants this product against defects in materials and workmanship to the purchaser for a period of one (1) year from the date of shipment. This warranty is limited to a repair or replacement of the product.

To obtain warranty service, the purchaser must first call Mobility Electronics, Inc. for an RMA number. The product needs to be shipped to Mobility Electronics, Inc. for repair or replacement. The package must be marked with the RMA number. The product must be registered or a proof of purchase must be provided with the product.

Purchaser shall prepay shipping charges for product(s) returned to Mobility Electronics, Inc. Mobility Electronics, Inc. will pay for return of the product(s) to purchaser, except that purchaser shall pay all shipping charges, duties, and taxes for products returned to Mobility Electronics, Inc. from a country other than the United States.

Mobility Electronics, Inc. makes no other warranty of any kind with regard to this material. Mobility Electronics, Inc. shall not be liable for errors contained herein or for incidental or consequential damages in connection with the furnishing, performance, or use of this material.

MOBILITY ELECTRONICS, INC. MAKES NO OTHER WARRANTY, EITHER EXPRESSED OR IMPLIED, WITH RESPECT TO THIS PRODUCT. MOBILITY ELECTRONICS, INC. SPECIFICALLY DISCLAIMS THE IMPLIED WARRANTIES OF MERCHANTABILITY AND FITNESS FOR A PARTICULAR PURPOSE.

Some states or provinces do not allow limitations on how long an implied warranty lasts, so the above limitation or exclusion may not apply to you.

THE REMEDIES PROVIDED HEREIN ARE CUSTOMER'S SOLE AND EXCLUSIVE REMEDIES. IN NO EVENT SHALL MOBILITY ELECTRONICS, INC. BE LIABLE FOR ANY LOST PROFITS, DIRECT, INDIRECT, SPECIAL, INCIDENTAL, OR CONSEQUENTIAL DAMAGES, WHETHER BASED ON CONTRACT, TORT, OR ANY OTHER LEGAL THEORY.

Known Limitations

Mobility Electronics is committed to offer the best product possible. Our team is continuously improving software drivers to eliminate or reduce the number of known limitations.

FOR LATEST DRIVER UPDATES:
www.mobilityelectronics.com/support/drivers

UP TO DATE KNOWN LIMITATION & COMPATIBILITY INFORMATION:
www.mobilityelectronics.com/support/compatibility.asp

- The IBM ThinkPad T20, 21, 22, and 23 requires the use of a Plug 'n' Play compatible monitor when using Windows® 98SE.
- IBM ThinkPad 600 users must hot dock for multi-monitor usage of an external display.
- Windows® 98 First Edition and Windows 95 are NOT supported.
- RICOH CardBus controllers are not supported.
- Select notebooks using the O2Micro CardBus controller are supported. Refer to the web address above to check specific notebook model compatibility.
- USB speakers and web cameras are not supported.
- PS/2 devices such as mice and keyboards are not hot-pluggable in Windows 2000 or XP. The system must be rebooted. All other operating systems supported by this product may allow to hot plug a PS/2 device.
- The external monitor does not support full screen DOS applications.

Care and Cleaning

If cleaning becomes necessary, spray a small amount of mild household glass cleaner on a lint-free, soft cloth and wipe the enclosure. Do not spray the glass cleaner directly on the product to avoid getting cleaner into the CardBus connector or ports on the unit. Do not immerse the product in water or other liquid.

Always keep the EasiDock 1000EV as dust-free as possible. If the CardBus PC Card becomes soiled, gently wipe the card with a lint-free, soft cloth that has been dampened with mild household glass cleaner. Always protect the gold contacts of the PC Card.

Technical Support & Customer Service

If for any reason you still need assistance after reviewing the troubleshooting section please contact us at one of the following numbers.

Register this product—registered users receive free technical support for the first ninety (90) days of product usage.

NORTH AMERICA ... **Mobility Electronics, Inc.**
17800 North Perimeter Drive
Suite 200
Scottsdale, AZ 85255
Technical Support ... 1-800-474-7593
Customer Service ... 1-800-474-7593
E-mail ... techsupport@mobl.com
Web... www.mobilityelectronics.com

8:00 AM – 8:00 PM EST, 7 days a week

EUROPE ... **Mobility Electronics Ltd.**
Regus House
Windmill Hill Business Park
Whitehall Way
Swindon
Wilts, England SN5 6QR
ph. (44) 1793 441 457
fx. (44) 1793 441 647

Technical Support Europe
French Support: (33) 1 64 53 91 47
German Support: (49) 211 6579 1147
English Support: (44) 207 744 0371
E-mail ... support-europe@mobl.com

Support Hours:
E-mail: 9:00 AM – 9:00 PM GMT Monday through Friday
Telephone: 9:00 AM – 9:00 PM GMT Monday through Friday
 10:00 AM – 4:00 PM GMT Saturday and Sunday

Technical Specifications*

Split Bridge

Data Transfer Rates	... 1.25 Gbs, high-speed, full-duplex
Connection to Computer	... 32-bit CardBus, Type II

Other

Universal Serial Bus	... Ver. 1.1 compliant
Video Port	... 15-pin
2 USB Ports	... USB Type A
DC Input	... 5VDC / 4A
PS/2 Keyboard Port	... 6-pin MINI-Din, supporting any PS/2 keyboard
PS/2 Mouse Port supporting	... 6-pin MINI-Din, multi-button mice
Serial Port	... 9-Pin RS-232
Printer Port	... IEEE-1284 compliant
Ethernet Chip:	... Realtek RTL8139
Ethernet Port	... 10/100 Base-T (RJ45)

Weights & Measures

Dimensions:	... 11.05"L x 4.64"D x 1.15"H
Weight:	... 3.2 lbs. (1.45kg) including power adapter and all cords

Environmental

Operating temperature:	... 50° to 104° F - (10° to 40° C)
Storage temperature:	... 50° to 104° F - (10° to 40° C)

* Technical specifications are subject to change without notice.

Regulatory Information

This device is certified to comply with the following agency/safety approvals.

CE Class B
FCC Class B
UL & cUL
TUV

Federal Communications Commission (FCC) Statement

This device complies with Part 15 of the FCC Rules. Operation is subject to the following two conditions: (1) this device may not cause harmful interference, and (2) this device must accept any interference received, including interference that may cause undesired operation.

If this equipment does cause harmful interference to radio or television reception, which can be determined by turning the equipment off and on, the user is encouraged to try to correct the interference by one or more of the following measures:

- Reorient or relocate the receiving equipment
- Increase the separation between the equipment and receiver
- Connect the equipment into an outlet on a circuit different from that to which the receiver is connected
- Consult a manufacturer's tech-support representative for help

Tested To Comply With FCC Standards



www.mobilityelectronics.com

Corporate

Mobility Electronics, Inc.
17800 North Perimeter Drive
Suite 200
Scottsdale, AZ 85255
ph. (480) 596.0061
fx. (480) 596.0349

Mobility Electronics Ltd.

Regus House
Windmill Hill Business Park
Whitehall Way
Swindon
Wilts, England SN5 6QR
ph. (44) 1793 441 457
fx. (44) 1793 441 647

© 2002 Mobility Electronics, Inc. The Mobility logo is a trademark of Mobility Electronics, Inc. Split Bridge, the Split Bridge logo and EasiDock are registered trademarks of Mobility Electronics, Inc. All other brand names and logos are trademarks or registered trademarks of their respective holders. P/N 7000060 Rev. F