

iGo[®] everywhere



For use with:



User Guide

Congratulations on your iGo[®] power purchase!
Compatible with most of today's popular gadgets, this iGo everywhere power solution allows you to power and charge from any standard wall or in-vehicle outlet. Lose the clutter of all those individual chargers and power your mobile phone, Bluetooth[®] headset, smartphone/PDA, MP3 player, portable gaming device, digital camera, GPS device and more from this single, convenient power solution.

Specifications

AC Unit

Input Voltage: 100-240 VAC
Dimensions 3.25 x 2.00 x 1.00"
(82.55 x 50.80 x 25.40mm)

In-Car Unit

Input Voltage: 11.0-16.5 VDC
Dimensions: 3.63 x 1.00 x 1.00"
(92.20 x 25.40 x 25.40mm)

Retractable Cord

Case Dimensions: 2.17 x 2.60 x 0.93"
(55.10 x 66.04 x 23.62mm)
Cord Length: 5.0' (1.52m)

Safety Features

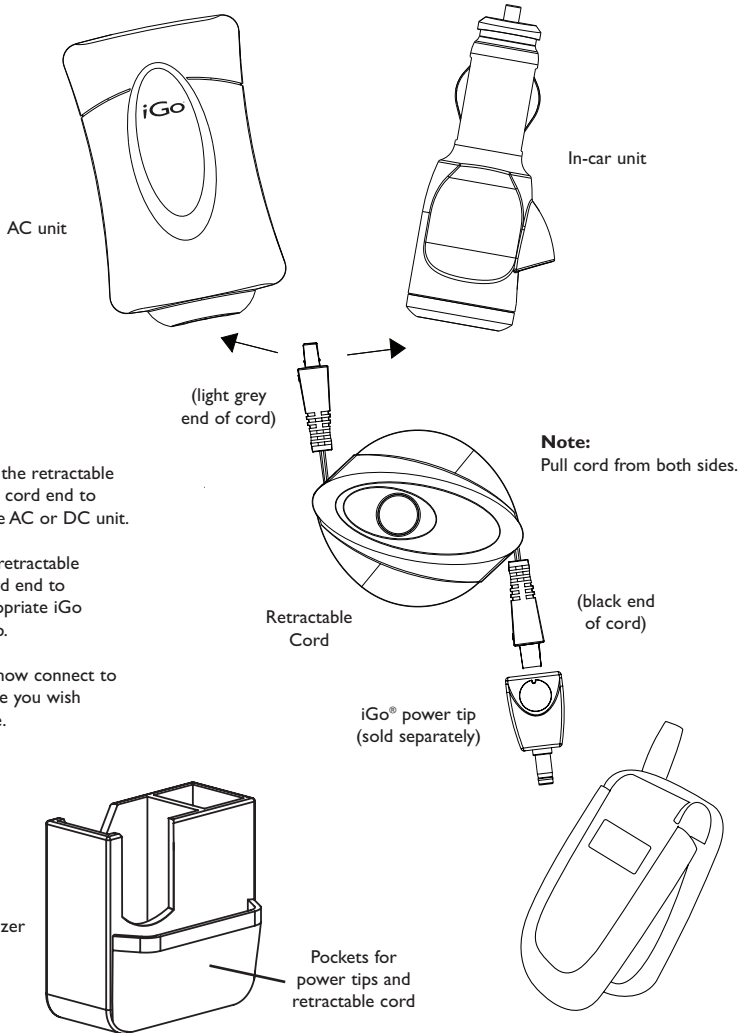
Current limit
Short circuit protection

Package Contents

- AC unit
- In-Car unit
- Retractable cord
- Travel organizer

www.iGo.com

© 2007 Mobilty Electronics, Inc. Mobilty Electronics iGo is a registered trademark of Mobilty Electronics, Inc. All other brand names and logos are trademarks of their respective owners. Specifications are subject to change without notice. Protected under one or more of the following patents: 5,347,211; 6,064,177; 6,643,158; 6,650,560; 6,700,808; 6,751,109; 6,775,163; 6,791,853; 6,920,056; 6,937,490 and 6,976,885. Other United States and foreign patents pending. Made in China. P/N 8040407-01 Rev A.



1. Connect the retractable light grey cord end to either the AC or DC unit.
2. Plug the retractable black cord end to the appropriate iGo power tip.
3. You can now connect to the device you wish to charge.

CAUTION: Hold one end of the cable while retracting. Do not let cord retract freely. Cord may jam on reel or whip back and forth and cause injury.